

SMU – CAPE (Continuing Adult Professional Education) – Web Design Certification Program

Photoshop Intro Class (1 of 2), Saturday, 3/24/2010

Substitute Instructor: Todd Moore

CM – Sign-up for his Facebook group: [Facebook.com/h.todd.j.moore](https://www.facebook.com/h.todd.j.moore)

check out URL:

public.me.com/aj.wood

- Photoshop and other class materials

ajwood.com/psimagesize

Opening New File Options

- Web image default – “dots per inch” dpi
- Images for Print – use “Document” section, sizes in inches

Stock Photo Sources

- iStock.com
- Shutterstock.com
- GettyImages.com

Color Palettes

- CMYK – Cyan, Magenta, Yellow, Black
- RGB – Red, Green, Blue
- Grayscale – for B/W images

PMS – Pantone Matching System

Workspaces

- ESSENTIAL
- DESIGN
- >> click to get Workspace Menu

Image Size Dialog

- Resample Image – to allow changing sizes

Clone Brush

- Copies sample area and pastes where you want it

Healing Brush – like the clone brush but is more **context sensitive**

- good to remove acne blemishes
- when clone adds unwanted artifacts
- softer blend with information around it

Explore YouTube for:

- “Photoshop Makeover” – some step by step using Photoshop tools

Tools Shortcuts

B – Brush Tool

S – Stamp

- Clone Stamp
- Pattern Stamp

Y – History

- History Brush
- Art Brush

J – Healing Brush

- Healing Brush
- Patch Tool – eliminates OR copies selection and modifies context-sensitive borders

Adjustments / Levels

Pointers below histogram

- move left pointer (black) to right if no data sampled
- move right pointer (white) to left to remove or lessen white highlights
- move pointers for each channel as well !!
 - o Red
 - o Green
 - o Blue

Adjustments / Curves

- Try pulling angled line into slight “S” curve to enhance colors in different parts of the spectrum

Adjustments / Brightness-Contrast

- Check “Preview” to see what changes Brightness and Contrast changes will do

Adjustments / Exposure

- better to adjust in Lightroom

Selected Adjustments

- Select certain areas with Marquee area (use magic wand or other tools like Lasso)
- Adjustment / (Any Menu Option)
- Final adjustments affect ONLY the SELECTED Area

COLOR

Human eye sees Red, Blue and Yellow BUT color LIGHT occurs differently

Color Picker

- 16,777,216 colors available !!
- H – hue
 - o 360 degrees around a circle
- S – Saturation (may be called Brilliance)
 - o amount of color in the color
 - if “0” value, it’s gray (no color, grayscale)
 - horizontal value in color picker
- B – Brightness
 - o amount of white or black in the color
 - if “0” value, it’s black
 - vertical value in the color picker
- RGB (important for web)
 - o R – red
 - o G – green
 - o B – Blue
 - o # - Hex value of color in pairs
 - F + F
 - Values 16 to 240 (by 15) + values 0 to 15 = total value of pair
 - FF0000 – Red
 - 00FF00 – Blue
 - 0000FF – Green
 - Yellow – FFFF00

- Cyan – 00FFFF
- Magenta – FF00FF
- Black – 000000
- CMYK (print)
 - C – Cyan
 - M – Magenta
 - Y – Yellow
 - K – Black

Adjustments / Photo Filter

- Old West aged image
 - use Sepia filter
 - max it out
- Old West aged image
 - De-saturate to grayscale
 - Photo Filter
 - Sepia and max it out

Adjustments / Posterize

- to LIMIT numbers of colors in the image
 - decrease LEVELS

Pen Tool (Bezier Tool)

- the line through each of 2 points determines the curve between them
- click along curve 1/3 of the way to the point of the curve
- when finished, pen tool will display “o” at the point where the selection is completed
- click PATHS tab
- click “MAK SELECTION”
- click Copy Selection and save

Filter / Blur / Gaussian Blur (creates the blurry image)

- Overall image adjustment
 - eliminates most blemishes (when used at 1pt)
- Using Layer Mask to isolate (pull forward)
 - create Layer Mask
 - click on Layer Mask icon on layer
 - **use Brush (Black) to CUT OUT areas in the Blurred Mask Image**
 - adjust hardness of edge and opacity to SOFTEN transition from sharpness of image and Blurred Mask background

CM Join Todd’s Facebook group for Photoshop !!

Facebook.com/h.todd.j.moore

- Request Friend (and he’ll add to group)

Intro to Photoshop Day 2, 3/31/2012

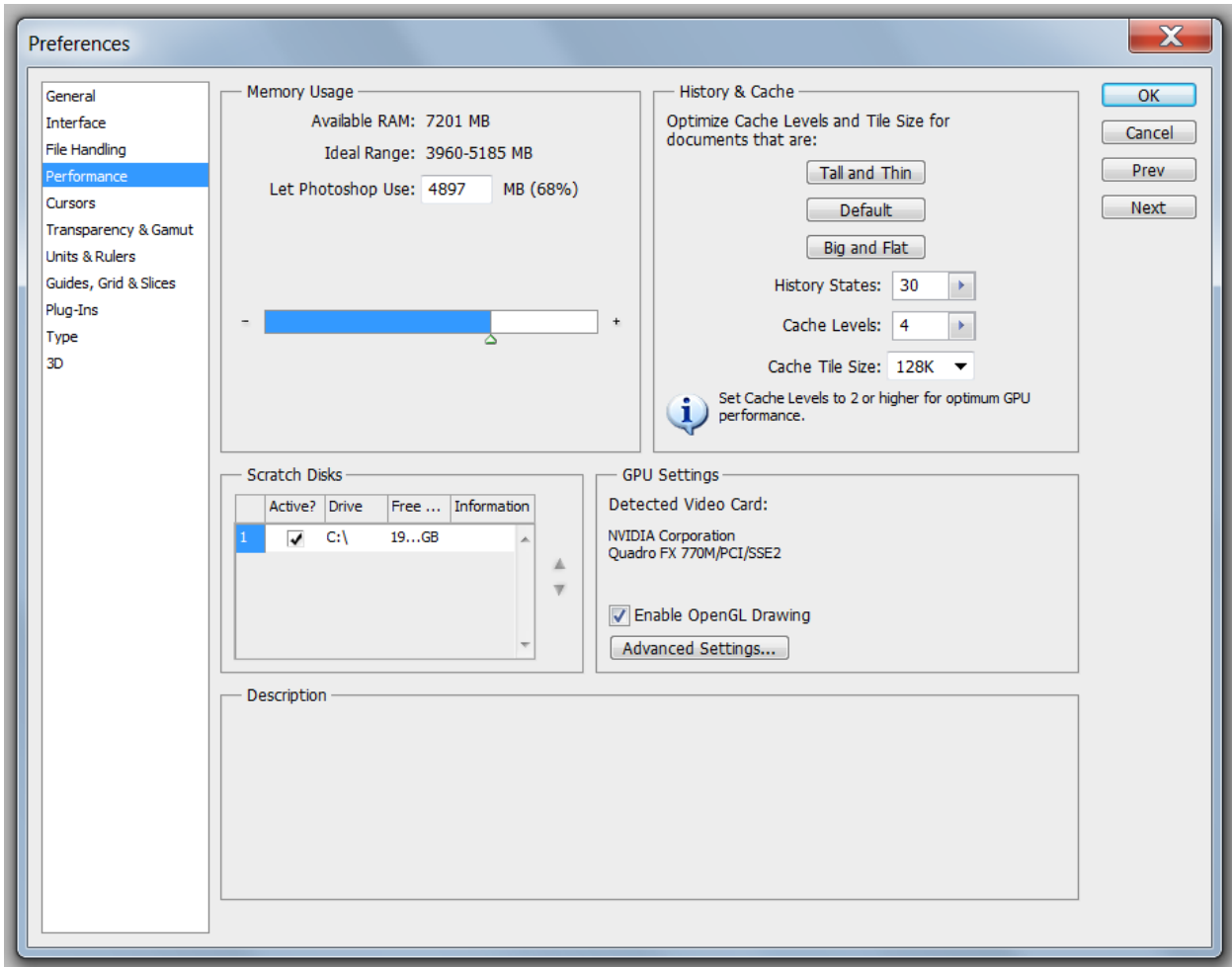
Instructor: AJ Wood

“Palette” = “Panel” same terminology for the same tool location in PS

“Undo” – only ONE Undo allowed in Photoshop, and means “It Never Happened”; HOWEVER, use the HISTORY Panel to remove steps

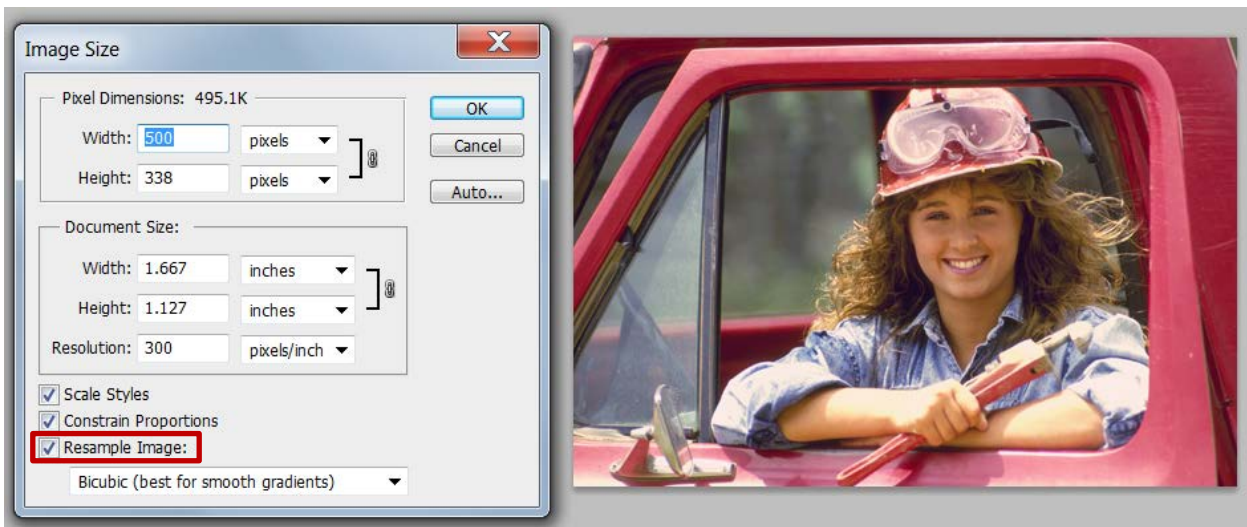
“Step Backwards” – Ctrl-Alt-Z on PC; (Ctrl Option Z on Mac) – removes steps from the History Panel

Edit / Preferences / Performance



- change the number of History steps that are saved

Image Size



Resampling OFF means that any change in size will keep the same number of pixels for the photo, BUT the pixels will look bigger or smaller.

- Scale Styles – governs shadows, lighting, highlights, etc. and re-sizes when you resize the image
- Constrain Proportions – keep the same “aspect ratio” of the image
- use Resampling to stretch image and create more pixels but will blur image.

On screen, computer monitor image: 72 pixels / inch

Print on Inkjet: 150 pixels / inch (draft quality)

High resolution print: 300 pixels / inch

IslandGirl image editing

- in History panel
 - o click on “camera” icon to create a second “Snapshot” of the image



“midtone contrast” in Photoshop means “Clarity” in Lightroom

Adobe Camera Raw application has it’s own tools and interface

CM – email AJ for info on Lightroom

<http://ajwood.com/2010/11/lightroom-vs-adobe-bridge>

Adjustments Menu

Vibrance

- targets the muted colors first
- IGNORES Orange (skin tones)
- good for portrait photos

Hue / Saturation

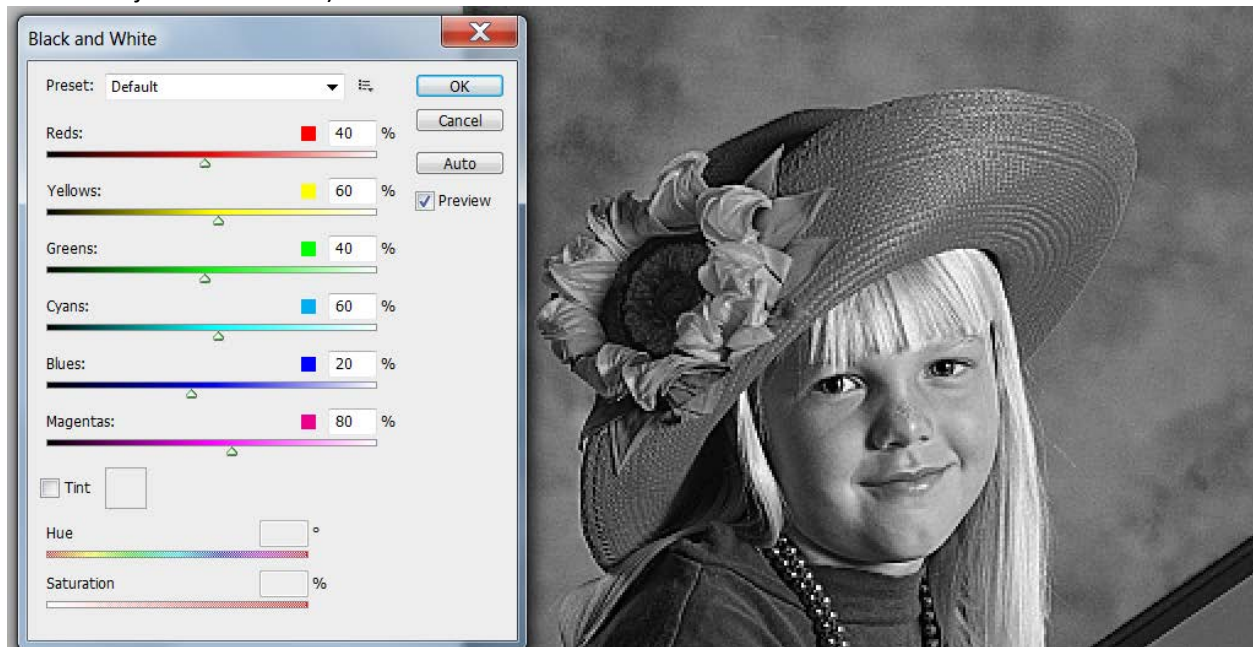
Brightness / Contrast

Desaturate

- creates a B/W image but sort of flat

Black and White

- gives access to each color channel to saturate / desaturate (ie better than Desaturate Adjustment choice)



Tools

Quick Select Tool

- grabs items quickly
- BUT creates jagged edges
- Follow it with “Refine Edge” dialog box
 - o Adjust Edge

Moving cursor into any selection, clicking, will move the selection area

- ONLY exception is the BRUSH tool

SHIFT key – adds area to a selection

OPTION key (ALT on PC) – subtracts from a selection

] – makes Brush (selection tool) Larger

[– makes Selection tool Smaller

Refine Edge

- View on different backgrounds
- Smooth eliminates jagged edge
- Feather gives image a “halo” look
- Shift Edge moves the selection closer or further from the image
- Click Show Original to view how the image has changed
- To SAVE the changes click in OUTPUT Dialog Area, drop down, SELECT “SELECTION”
 - o Other options include “New Mask”,
- Edge Selection to refine edges of ‘hair’, ‘whiskers’, etc.
- Smart Radius then move tool around where edges of fur are to add in the hair, fur and whiskers.
- Click Show Radius – try to keep Radius as small as possible

New File

- Make new layer (post-it icon at bottom of layer panel)
- Edit / Fill / dropdown Foreground Color
- Or use Paint bucket to fill the image (under Gradient tool)

UNCHECK

- Auto Select – which will select the layer which Photoshop thinks you want
- Show Transform Controls – ONLY necessary when using a Transform tool
 - o Otherwise will prevent creator from using a second tool until a transform is “checked / confirmed” or “cancelled”.

Eyeball – Show or Hide a Layer

- Alt + Eyeball will Hide everything else

Opacity enables you to see through the layer

Ctrl-Click on the ICON of the Layer, selects items in the layer

Options for Panels (horizontal lines icon, upper right of the panel)

- For layers panel, can merge layers

Edit / Content-aware Scale

- Transforms the size of an image
 - o Recognizes buildings, boats, and people
 - o Can be used on objects or on whole images with multiple objects
 - o Water, sand, beach, will distort but because of the nature of those objects, it's hard to tell.
- To **EXCLUDE** content from the transformation
 - o Select with Quick Selection Tool
 - o **SELECT / SAVE SELECTION**
 - o **THEN EDIT / Content-aware Transform**

<http://ajwood.com>

Check out his YouTube lessons

- Look for Photoshop Playlists

USE Adjustments PANEL Instead of a Dialog box which you HAVE TO CLICK OFF!!!

- **Non-destructive**
- **Creates a Layer Mask that you can edit layer !!!**
- **Curves panel stays inside the new layer**
- **Left arrow reveals other Adjustments**
- **Any Other Adjustments created from the Adjustment Panel creates an Adjustment LAYER**

Preferences are Messed up

- Solution
- Restart Photoshop
- IMMEDIATELY press CTRL-ALT-SHIFT to reset to defaults

Layer "Normal" Dropdown Color Layer Adjustments

- **Screen** knocks out black
- **Overlay** knocks out gray
- **Multiply** knock out white

Type Tool

- Change the font size OR
Use Free Transform and scale the size
- Use Bevel, Drop shadow, and Outer Glow
 - o Changing Opacity changes the layer contents and style
 - o Changing the Fill ONLY changes LAYER CONTENTS (in this case like a WATERMARK)

Saving Your own Text Style

- In Style Dialog under OK, see “New Style” and save it
 - o Remains with the Application!

Edit

- Auto-Align
 - o Overlay multiple images of the same content to reveal or hide moving objects or blinking eyes, etc.

Using Filters

- FIRST pick **Convert for Smart Filters**
 - o See it adds a Smart Object Icon on the Layer Icon!!
 - o Allows transformations without damaging the image or deleting pixels.
 - o Is NON DESTRUCTIVE
- To reverse Fast Shutter Speed
 - o Convert for Smart Filters
 - o Choose “Motion Blur” to represent moving object
 - o Paint on the Motion Blur Mask (see Layer) and paint over what you do NOT want blurred with BLACK
 - White reveals the Blur
 - Black erases the Blur
 - o Practice with the “TireSwing.jpg” file (girl on tire swing)

Chinese Sample

我是牟昭文